

An Improved Computational Software Reliability Model using ANFIS

Shubhi Bhardwaj
M.Tech (CSE) Scholar
ABES Engineering College, Ghaziabad (India)

Amit Sinha
Associate Professor
ABES Engineering College, Ghaziabad (India)

ABSTRACT

Software reliability is an important attribute of software engineering to ensure the success of software. Software reliability is the probability that there will no failure for a specified time. The reliability of the software depends on various attributes of software such as Size of software, Number of failures and Total time. These data sets of known software follow a specific trend which needs to be studied. The present work collects and analyzes these data sets. The training of these data sets is done through ANFIS. The relative error at definite epochs is noted. The software to be tested is then passed to same network that will give the desired result.

Keywords

Software Reliability, ANFIS.

1. INTRODUCTION AND LITERATURE REVIEW

1.1 Introduction

With the rapid growth of software [4], it is very essential to develop a quality software within resource constraints [8][9]. Software reliability is the process which helps to developed the failure free software which can work failure free operations. Software reliability is the probability in which software will perform failure free operation under specified time of period[8]. Software reliability does not guarantee that the software will be 100% reliable but it will give quantitative measurement of the software. he software reliability depends on some historic data of same domain i.e. reliable and unreliable. The training of such data sets explains the trend of reliability and unreliability. The present work uses such training through ANFIS. The software to be tested when passed upto same training datasets gives more accurate result than previous methods.

1.2 Literature Review

Ramakanta Mohanthy et al.[1] proposed a Ant Colony Optimization technique(ACOT) for predicting software reliability based on data collection. The dataset was divided into 80:20 ratio for training and test data respectively. The Root Mean Square Error(NRMSE) was used for the measurement of dataset and to verify the result.

Dongliang Yuan et al.[2] proposed a model which uses the ANFIS .The network takes size of software as a input and give the prediction of software as a output. The model accuracy was tested and verify by comparing the predicted result with RBF neural network.

Khyati M.Mewada et al.[5] proposed a framework which include software effort using neuro fuzzy based (ANFIS tool box) of MATLAB. The model implementation was done on 18 NASA dataset. The membership function was computed for each dataset. After computed the membership function, RMSE and MMRE criteria were computed for each

membership function for comparing the performance of dataset.

2. OBJECTIVES

The present paper has the following objectives:

- (i) To identify the important attributes of different known software.
- (ii) To train the data sets and to observe a trend.
- (iii) To check the reliability status

3. HYPOTHESIS

The reliability of any software follows a trend of reliability or unreliability and highly depends on three attributes such as size of software (S), number of failures (F), and total time (T)

4. PROPOSED WORK AND METHODOLOGY

The present work uses the trend of reliable and unreliable known software. The earlier research work used the mathematical model having attributes of software. In this work, the problem of checking reliability is reviewed with different methodology and found a significant improvement over the previous one.

The important attributes of the software that may affect the reliability at greater extent are: Size of the software, Number of failure and Total time.

The data collection has been done through several reliable and globally accepted government websites as well as the previous research work over which an improvement is to be claimed such as cyber security and information system information analysis center.

The steps for the present work are

4.1 To Identify the Important Attributes:-

The three important attributes are collected from known software) A sample of such list is shown in Table -1.

Table 1:- Different Software Dataset

Size	No. of failures	Time(sec)
2011	415	50000
124911	86	50000000
18018	360	50000000
56200	225	300000
164500	374	5000000
39899	381	210000
204229	390	35000000

1991	51	5500
64890	196	310000
22517	182	120000
56866	117	6000

4.2 To Train the Set of Attribute and to Fix Trend

ANFIS is adaptive neuro fuzzy inference system, it combines the features of neural network and fuzzy logic principle. ANFIS is a hybrid learning algorithm. It is based on Sugeno-Takagi fuzzy inference system [6].

Matlab toolbox ANFIS is used to train the data sets. The values are divided into two parts for training and testing data

sets respectively. Further training error is calculated and fixed at constant error.

4.3 To Check the Reliability Status:-

The software to be tested will be passed through same dataset and observe an error. The error within the set limit will give its reliability.

5. IMPLEMENTATION AND RESULT

The implementation of the present work can be shown through sample data sets

S1 = 21700 F1=136 T1=100000

5.1 Training Error

Training error is calculated through anfis TOOL IN MATIAB R2013A as shown figure 1

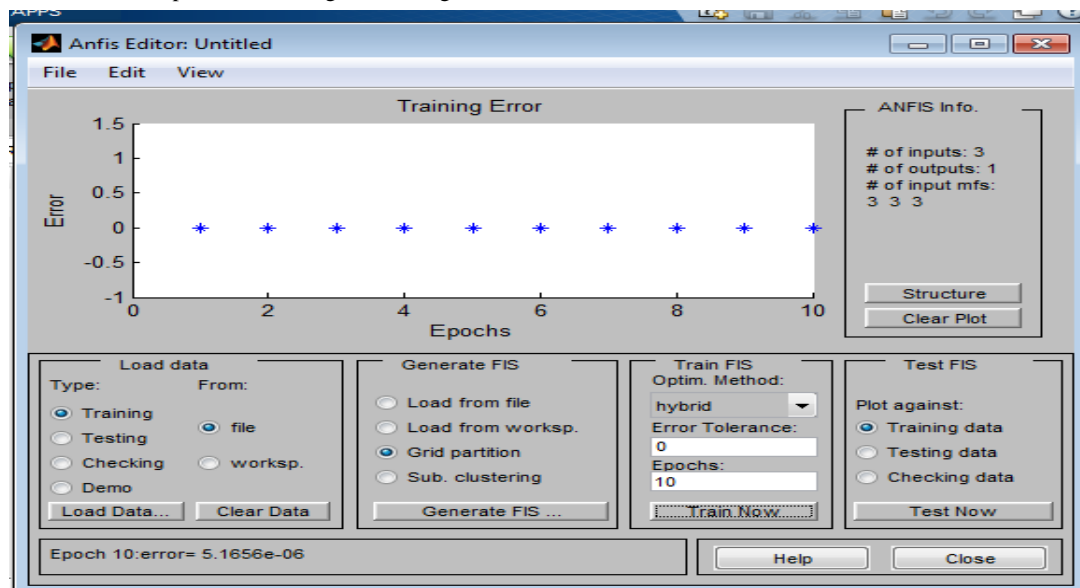


Figure 1:-Training Error at epoch 10 is $5.165e^{-06}$

5.2 Testing Error

The given sample is passed through the same training error, shown in figure-2 and found the testing error $1.7731e^{-06}$ this error explain that the software is reliable.

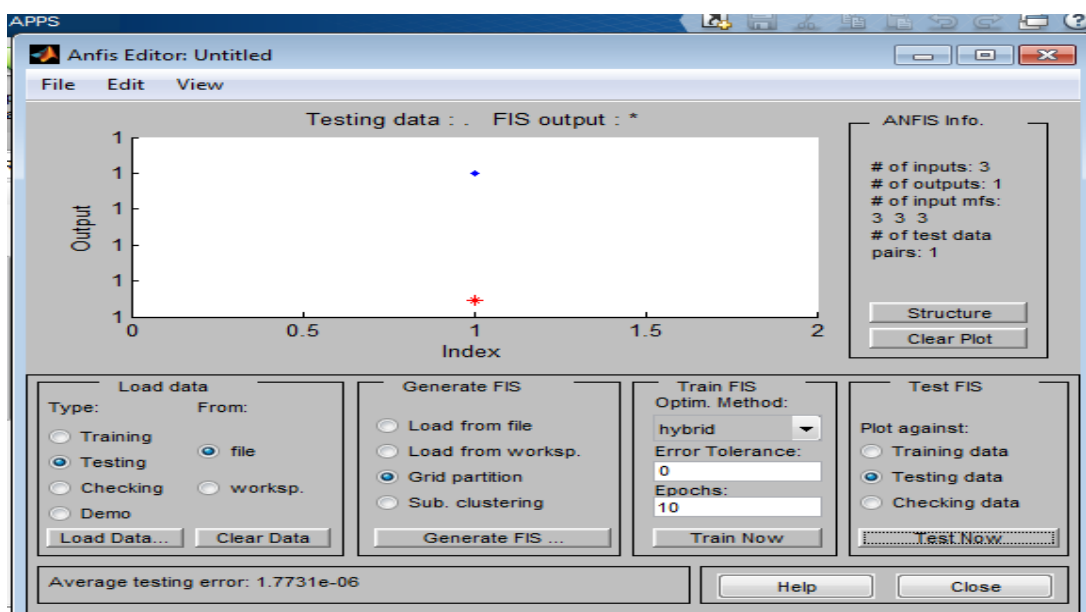


Figure 2: The testing error is $1.7731e^{-06}$

6. VALIDATION OF THE RESULT

The proposed work is applied on the same data sets of [5] and found a good improvement on checking of reliability apart from three attributes in present work in place of one attribute

in [5]. The work is again validated through data sets of known software and it is upto 80%.

A sample of such software is shown below:-

Table 2: Testing error for different software data sets

Size	No. of failure	Time (sec)	Testing error	Status of software	Original status
2011	415	50000	9.3219e ⁻⁰⁶	unreliable	unreliable
124911	86	50000000	8.974e ⁻⁰⁵	reliable	Reliable
18018	350	50000	3.4982e ⁻⁰³	reliable	unreliable
56200	225	300000	9.1151e ⁻⁰⁶	unreliable	unreliable
164500	374	5000000	5.3999e ⁻⁰⁵	reliable	reliable
39899	381	210000	9.3312e ⁻⁰⁶	unreliable	unreliable
204229	390	35000000	3.4895e ⁻⁰³	reliable	reliable
1991	51	5500	5.4325e ⁻⁰⁶	reliable	Reliable
64890	196	310000	9.9496e ⁻⁰⁶	unreliable	unreliable
22517	182	120000	3.1743e ⁻⁰⁵	reliable	reliable
56866	117	6000	8.7567e ⁻⁰⁵	reliable	reliable
2010	400	5000	6.9597e ⁻⁰⁶	reliable	Unreliable

7. CONCLUSION

Software has various steps through its development. The reliability of any software is an important aspect. It depends on various features of software. Few of the important feature are size, number of failure and time of failure. This paper examine these three features and found definite trend is followed by almost all known software. The implementation in MATLAB through ANFIS gives a constant training error. On the basis of this error, the similar error may be calculated for any unknown software to be tested and can be checked for its reliability.

8. REFERENCES

- [1] Mohanthy, R.; Naik, V.; Mubeen, A., "Software Reliability Prediction by Using Ant Colony Optimization Technique," Communication Systems and Network Technologies (CSNT), 2014 Fourth International Conference on , vol., no., pp.496,500, 7-9 April 2014.
- [2] Dongliang Yuan; Chenchen Zhang, "Evaluation strategy for software reliability based on ANFIS," electronics and communications and control (ICECC), 2011 International Conference on , vol., no., pp.3738,3741, 9-11 Sept. 2011
- [3] <https://sw.csiac.org/databases/sled/swrel.php>
- [4] Kun Han, Jun-Hai Cao, Shou-Hua Chen, Wei-Wei Liu" A Software Reliability Prediction Method Based on Software Development Process", 2013 International Conference on Quality, Reliability, Risk, Maintenance, and Safety Engineering (QR2MSE).
- [5] Khyati M. Mewada, Amit Sinhal and Bhupendra Verma" Adaptive Neuro-Fuzzy Inference System (ANFIS) Based Software Evaluation "IJCSI International Journal of Computer Science Issues, Vol. 10, Issue 5, No 1, September 2013. of Advanced Research in Computer Science and Software Engineering, Volume 2, Issue 10, October 2012
- [6] Lawrence Bernstein, C.M. Yuhas, "Design Constraints That Make Software Trustworthy", IEEE-2008.
- [7] D.Raheja, L.Gullo, "Developing reliable tools", IEEE-2012.
- [8] Ivano Irrera, Joao Duraes, Marco Vieira," On the need for training Failure Prediction algorithms in evolving software systems" 2014 IEEE 15th International Symposium on High-Assurance Systems Engineering